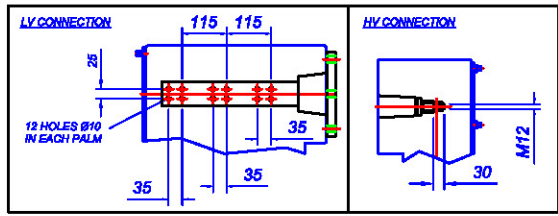
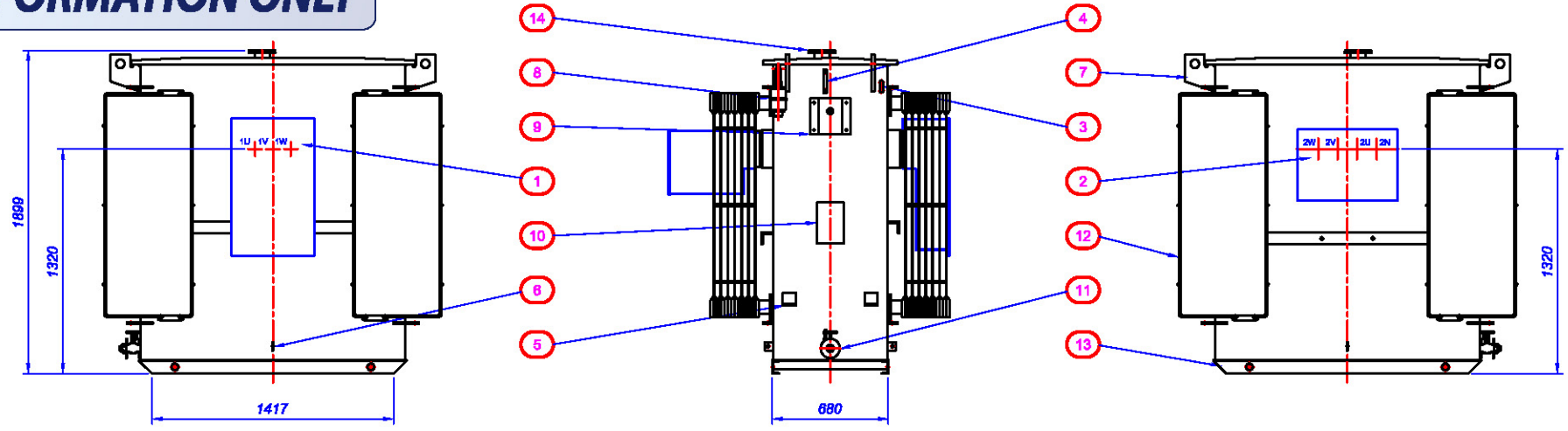
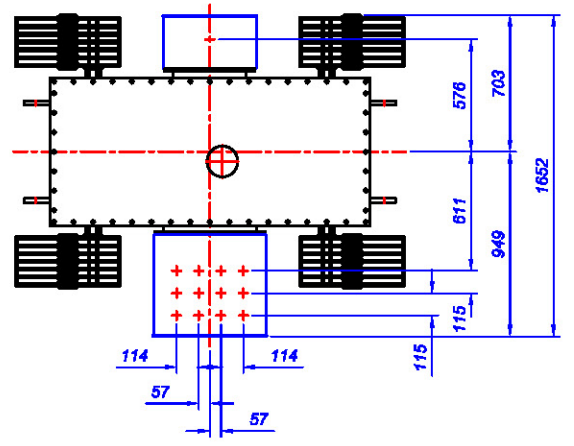


INFORMATION ONLY



NOT APPROVED



ITEM	DESCRIPTION
1	HV CABLE BOX 3 POLE 1 GLAND (TERMINATION KIT REQD)
2	LV CABLE BOX 4 POLE 12 GLAND AIR FILLED
3	THERMOMETER POCKET
4	LIQUID LEVEL GAUGE
5	JACKING ANGLES
6	EARTH TERMINAL (ONE EACH SIDE)
7	MAIN LIFTERS
8	SILICA GEL BREATHER (SUPPLIED LOOSE)
9	TAPPING SELECTOR CONTROL HANDLE (ENCLOSED IN COVER)
10	RATING AND DIAGRAM PLATE
11	1" BSP DRAIN VALVE AND PLUG
12	INTEGRAL TYPE RADIATOR, 1200 CENTRES, 7 PANELS
13	BASE SKIDS DRILLED FOR ROLLER AXLES
14	LIQUID FILLER PLATE

BOWERS JOB No.	-
OUTPUT	1800 kVA
VOLTAGE RATIO	11000 / 415
AMPERES	83.98 / 2228
PHASES	3
FREQUENCY	50Hz
VECTOR SYMBOL	Dyn11
ESTIMATED WEIGHTS	
CORE AND WINDINGS	2400 KG
COOLING LIQUID	1145 LTRS 910
TOTAL WEIGHT	4290



This drawing is COPYRIGHT and the property of Bowers Electricals Ltd. It must not be copied (in whole or in part) without prior written consent of the company.

TOLERANCE UNLESS OTHERWISE STATED:
 ± 6mm FOR DIMENSIONS UP TO 250mm;
 ± 10mm FOR DIMENSIONS UP TO 1000mm;
 ± 20mm FOR DIMENSIONS OVER 1000mm.

RevNo	Revision Note	Date	Signed	Checked

Bowers
 Electricals Ltd
 Heator Gate Road,
 Heator, Derbyshire, DE75 7GX
 Tel: 01773 531831 Fax: 01773 716171
 E-mail: enquiries@bowerselec.co.uk

Drawn by M.NEWTON
 Checked by T.BARKS
 Approved by A.V.HALL
 Job No. STOCK
 Date 03/12/16
 Size A2
 GENERAL ARRANGEMENT OF
 1800KVA 11000/415v ONAN Dyn11
 ALUMINIUM WOUND
 ECO TRANSFORMER

DRG No. BE7477
 FIRST ANGLE
 Scale 1:20
 Revision 0
 Sheet 1/1