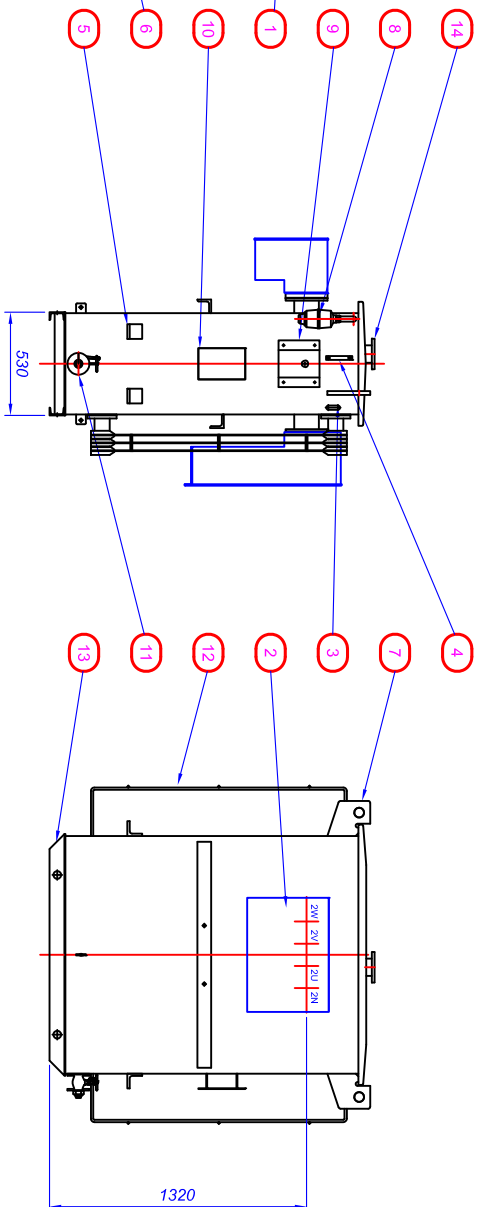
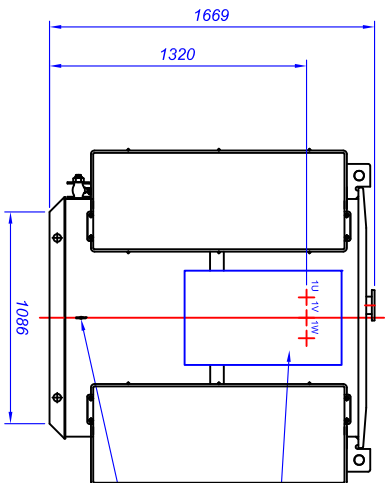
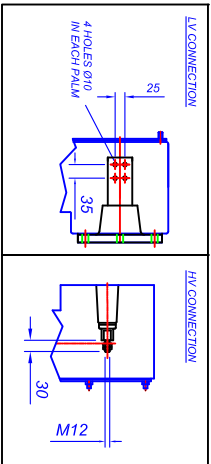


INFORMATION ONLY

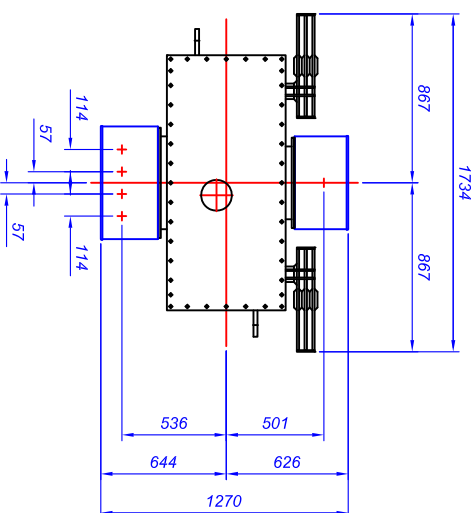


NOT APPROVED



| ITEM | DESCRIPTION |
|------|---|
| 1 | HV CABLE BOX 3 POLE 1 GLAND (TERMINATION KIT REQD) |
| 2 | LV CABLE BOX 4 POLE 4 GLAND AIR FILLED |
| 3 | THERMOMETER POCKET |
| 4 | LIQUID LEVEL GAUGE |
| 5 | JACKING ANGLES |
| 6 | EARTH TERMINAL (ONE EACH SIDE) |
| 7 | MAIN LEFTERS |
| 8 | SILICA GEL BREATHER (SUPPLIED LOOSE) |
| 9 | TAPPING SELECTOR CONTROL HANDLE (ENCLOSED IN COVER) |
| 10 | RATING AND DIAGRAM PLATE |
| 11 | 1" BSP DRAIN VALVE AND PLUG |
| 12 | INTEGRAL TYPE RADIATOR, 1200 CENTRES, 3 PANELS |
| 13 | BASE SKIDS DRILLED FOR ROLLER AXLES |
| 14 | LIQUID FILLER PLATE |

| | |
|-------------------|---------------|
| BOWERS JOB No. | - |
| OUTPUT | 500 kVA |
| VOLTAGE RATIO | 11000 / 415 |
| AMPERES | 26.24 / 695.6 |
| PHASES | 3 |
| FREQUENCY | 50Hz |
| VECTOR SYMBOL | Dyn11 |
| ESTIMATED WEIGHTS | KG |
| CORE AND WINDINGS | 1700 |
| COOLING LIQUID | 614 LTRS |
| TOTAL WEIGHT | 510 |
| | 2130 |



This drawing is COPYRIGHT and the property of Bowers Electricals Ltd. It must not be copied (in whole or in part) without prior written consent of the company. ©

TOLERANCE UNLESS OTHERWISE STATED
 ±5mm FOR DIMENSIONS UP TO 250mm;
 ±10mm FOR DIMENSIONS UP TO 1000mm;
 ±20mm FOR DIMENSIONS OVER 1000mm.

| Rev/No | Revision Note | Date | Spined | Checked |
|--------|---------------|------|--------|---------|
| | | | | |

Bowers Electricals Ltd
 Hainor Gate Road, DE75 7GX
 Tel: 01773 521531 Fax: 01773 716171
 Email: enquiries@bowerselec.co.uk

| Drawn by | Checked by | Approved by | Job No | Date | Size |
|----------|------------|-------------|--------|----------|------|
| MAYERTON | T.BARRIS | A.Y.HALL | STOCK | 30/01/16 | A2 |

GENERAL ARRANGEMENT OF
 500kVA 11000/415V OLAN Dyn11
 ALUMINIUM WOUND
 ECO TRANSFORMER

DRG No. **BET472**

Scale 1:20

Revision 0

Sheet 1/1